

# WOODCRAFT TIMES

-----  
Welcome to our Newsletter!

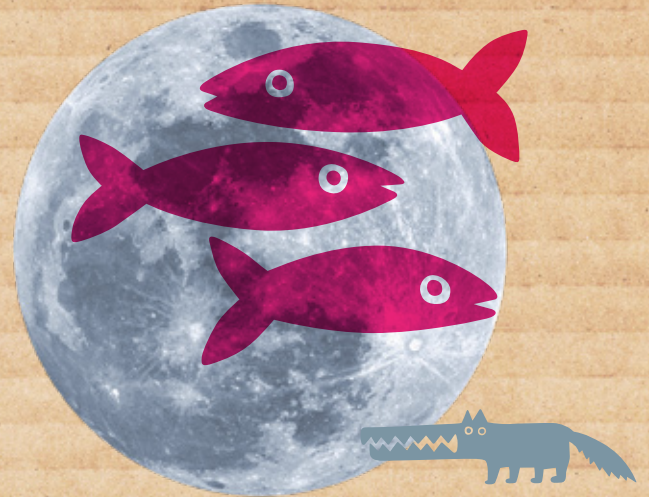
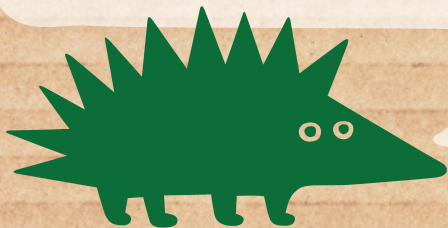
Dear Members and Parents,

Welcome to the 4th issue of the Harrow Woodcraft Times and thank you to all of you who have sent in photos and stories of how you have been doing while in 'lock-down' This issue reflects the responses from our young members who have been amazingly creative and we will be looking for more to feature in future issues.

The 'Friends of HWcF' WhatsApp group is proving to be a popular meeting point and Duncan has been placing resources on the App which are worth visiting and enjoying. For those who haven't joined but wish to please send your details and telephone number to Duncan Buttle, the host. Duncan's email is:

[harrowwoodcraftfolk@yahoo.co.uk](mailto:harrowwoodcraftfolk@yahoo.co.uk)

With the 75th anniversary of the end of the 2nd World War happening this Friday 8th May 2020, let us pause and reflect on the Woodcraft Folk's motto: 'Span the World with Friendship' and that we resolve to work for peace, everywhere.



APRILS FULL MOON *is called*  
**PINK, GRASS, EGG OR FISH!**

-----  
Q) What do you call a magician who has lost his magic?

A) Ian.



If you saw the symbol on a map what would it mean?

-----  
(Answer on the last page)







(FIRE FROM WELLS-NEXT-THE-SEA CAMP 2019)

# HOW TO BUILD A CAMP FIRE ----- PART TWO ----- GOLDEN RULES:

## No 1 ONLY USE DEAD OR DRY WOOD FOR FIRES

Not green/live wood. Never cut down trees or lop off live branches unless pruning or managing a tree/forest.

In Mad Bess Wood, where we camp, we are not allowed to take axes and saws into the wood. We are allowed to collect the dead wood on the ground or off a tree.

## No 2 NEVER LIGHT A CAMP FIRE NEAR OVER HANGING BRANCHES OR NEAR TENTS

Sparks can carry and cause damage. (Always have a bucket of water near so that if the fire spreads you can douse it).

## No 3 DO NOT LIGHT FIRES ON THE GRASS

Clear a patch by lifting the grass by turving, usually a rectangular area. (For this you will need a spade). The size of the area removed will be according to the type of fire. Keep the turfs and stack in a tidy pile to one side. These will be replaced once you have finished with the fire, having let the earth cool, cleared ashes/unburnt wood and soaked the scorched area.



IN THE NEXT ISSUE WE WILL TALK ABOUT AXES!!



Woodcraft Folk



*Even more!*





# HARROW WOODCRAFT *Summer Camps*



Woodcraft Folk



*and more!*





# Weekend Camps

MAD BESS WOODS



Woodcraft Folk



*and more!*





# POST WAR YEARS 1945-50

## HISTORY OF THE HARROW WOODCRAFT FOLK.Pt4

Harrow Woodcraft Folk 1947 and Banners.



With the return of the Folk members from the armed forces Harrow Woodcraft Folk saw an increase in group openings. Which gave rise to the District being called Stanharken Thing. (The word 'Thing' being an old Anglo-Saxon word for a joining together of groups. The groups being in Stanmore, Harrow and Kenton).



Lone Pine Fellowship became a Pioneer group. The Patteran Elfins being run by Heather, ably assisted by her helper Rosebud was growing in numbers. The District camps were now being held at Pears Wood in Stanmore. (Near the Stanmore Orthopaedic Hospital).

The Lone Pine Pioneer group met at the Masons Avenue Co-op Hall on a Friday evening and

would run from 7:00 to 9:00 pm. With Badger being assisted by the older teen age 'Helpers' who ensured that the programme of games, craft-work (mainly leather-work and lino cuts/printing), folk-dancing, badge work and drama was progressed in separate clans. Songs were learnt by reading the words from the Woodcraft song book and joining in with the older members when playing the 'scarf game'. The subs in those days being 2d (old pennies) a week. The members also looked forward to buying the magazine called 'Our Circle' with sections on stories, puzzles, games and camping. Each member had a 'folk name' which having made a badge of it, was worn on the folk shirt. It should be mentioned here that the Watford and Harrow Co-operative Society gave both Watford and Harrow Woodcraft Folk support by low hall rents and helping with transporting camp equipment to the large camp.

In 1946 the first post-war international camp was held again in Rottingdean and it was at this camp that the local Folk made contact with the Dutch Trekvogels, which developed into a long standing friendship.

In 1949 the Harrow Folk ran a highly successful Summer Camp on the Isle of Sheppy at which they entertained a group of Red Falcons from Lille in France. It was during this time that many persons, who later became leaders locally, joined the Folk as children and teenagers.



Woodcraft Folk



*and more!*





# A SHOUT-OUT TO *Henry and Livie*

Who have enjoyed the new woodcraft challenges: They especially like the idea of working towards a badge.

They have made a vegan meal comprising of home made bread rolls with herbs from their garden and a colourful bean salad.

Went on a walk to collect supplies to make nature faces

Started writing postcards to friends/family a long way a way who they haven't seen for a long time.



Woodcraft Folk



*and more!*





# A BIG UP TO *Owen, Dylan and Macsen*

I AM DOING MY  
OWN VERSION  
OF THE PLANK,  
IT'S CALLED  
SLEEPING!



The boys have done some amazing Picasso inspired artwork using cardboard boxes.

And also been keeping fit by doing the 'Plank Challenge' (seeing how long you can stay in a plank position!)



## WhatsApp Group

One way of ensuring everyone is kept informed would be a WhatsApp Group for parents and members. Is this a good idea? Let us know what you think.

Editor: John Woolf

Email: [johnwoolf9@gmail.com](mailto:johnwoolf9@gmail.com)  
[harrowwoodcraftfolk.btck.co.uk](http://harrowwoodcraftfolk.btck.co.uk)

ANSWERS: MAP ICON 'CASTLE / FORT'